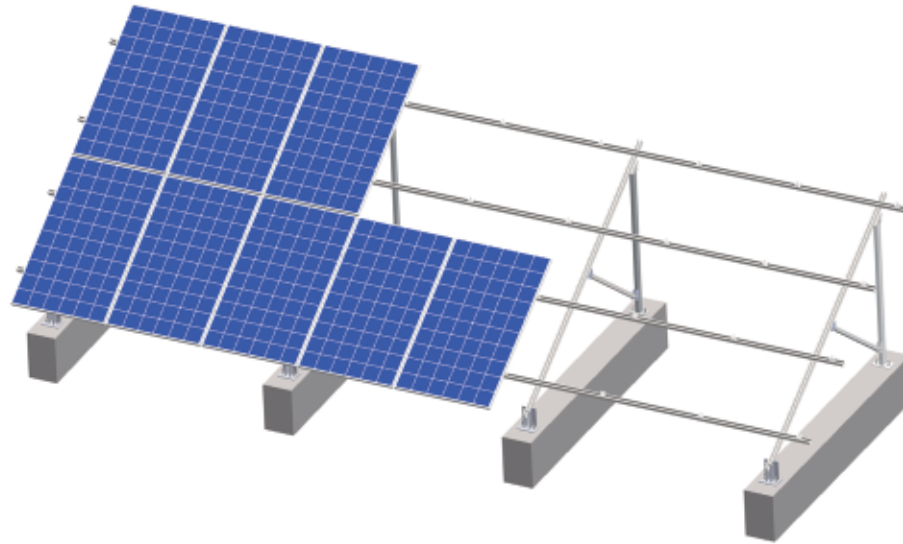


# Cuboid Concrete Foundation Solar Mounting System



Series Name : CF-I



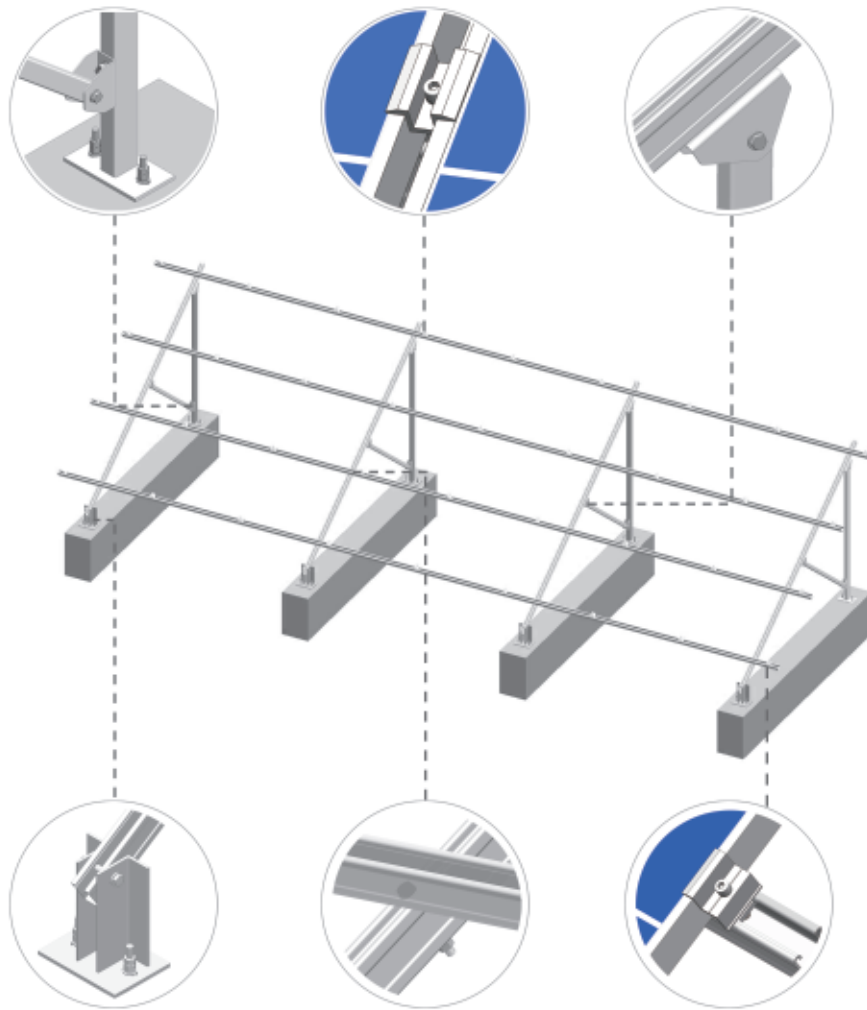
## Technical Data

- Solar system: PV plant, PV park, open area ground PV system
- System type: ground concrete foundation
- Material Option: hot-dip galvanized steel, Aluminum ,Stainless Steel
- Max snow load: 1.0 kn/㎡
- Max wind load: 36 m/s
- Mounting angle: customized design; fixed
- Module: framed crystalline module, unframed thin film module
- Module connection: middle & end clamp
- Average thickness of zinc layer: up to 80 um or customized

## Features

- Easy & quick installation
- cost effective
- High robust, stable & durable
- Cementing base at the site making sure even structure array
- Fit to the country where concrete cost is low
- Fit to strong wind, heavy snow area
- Fit to different soil condition, like soft grassland, rock & stony soil, gobi, desert, macadam
- Maximum module array vertically & horizontally
- 10 years durability warranty
- 25 years anti corrosion warranty





WM-01	WM-22	WM-02	WM-06	WM-14	WM-15
Connector	Rear Stand Foot	Connector	Beam Connector	Vertical Rail	Beam
Q235B hot dip galvanized steel					
WM-19	WM-12	WM-24	WM-27	WM-34	WM-35
Support Rail	Rear Pillar	Front Stand Foot	Bolt / Zigzag	Middle Clamp	End Clamp
Q235B hot dip galvanized steel			Bolt:Stainless Steel Zigzag:hot dip galvanized steel	Aluminum alloy	